

# **ACCURATE** **DRAFTING, INC**

Computer generated shop  
drawing and consulting for the  
Commercial glazing industry



Accurate and explicit drawings  
custom generated for use in the  
office, shop and field

*Accurate Drafting, Inc.*  
8126 Foxdale Drive  
Norfolk, Virginia 23518  
**(757) 587-1898 Phone**  
**(757) 587-1897 Fax**  
**adisales@accuratedrafting.com**  
**http://www.accuratedrafting.com**

Accurate Drafting, Incorporated  
8126 Foxdale Drive  
Norfolk, Virginia 23518

TO:

## **About Accurate Drafting, Inc.:**

Accurate Drafting, Inc. was formed in 1996 by two glass industry professionals, Tony Wood and Bill Pilcher. Both partners have over 20 years of experience each in the contract glazing industry. Previous positions held include draftsman, project manager, estimator/salesman, fabricator, glass cutter and field mechanic/glazier. It is this experience and the latest computer drafting and communication technology that allows Accurate to serve the needs of it's customers. Accurate's core drafting force is the two partners and an ex-Kawneer draftsman, Brent Meeks, who works in Springdale, Arkansas. Brent has 11 years of experience in shop fabrication, takeoff and drafting/drafting supervision. Accurate's workforce is supplemented by young draftspersons as needed to perform some of the tasks that do not require extensive glass and aluminum industry experience.

## **Pricing:**

New projects are invoiced by the sheet (unless they are quoted projects). *The actual cost to the customer is determined by using the multiplier shown below against the list price of \$200.00 per sheet.* This calculation provides the price of one sheet generated in Accurate's standard drawing format (described further in this brochure). To obtain that sheet price, Accurate's "shop drawing questionnaire" must be submitted with the project documents. *If the questionnaire is missing or not filled out enough to be useful, a \$10.00 per sheet charge will be added to the project.* An hourly rate for revisions is also noted below and will be explained further within this brochure. *All Accurate pricing is subject to Accurate's pricing guidelines. These guidelines can be requested from the website and by e-mail or phone.*

Please call or send an e-mail to obtain a multiplier, revision rate and/or shop drawing questionnaire for your company. Accurate also provides free estimates and quotations for projects upon request. Please visit our website to find out more about Accurate Drafting and view sample drawings and photos of past projects.

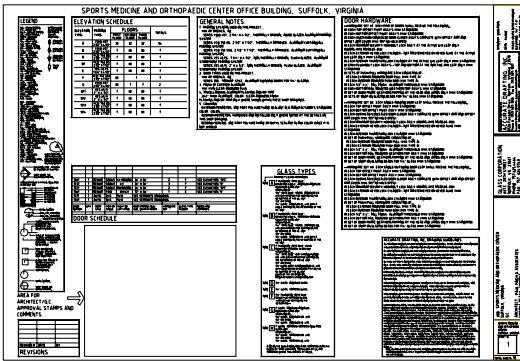
Multiplier for the customer that this brochure is  
addressed to:

Hourly revision rate for the customer that this brochure  
is addressed to:

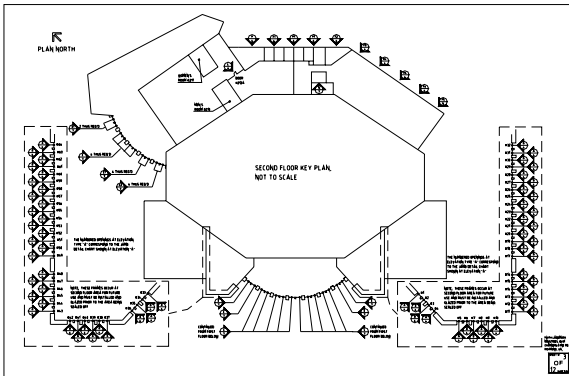
**Accurate Drafting's standard shop drawing format summarized....**

This format was designed to ensure that the shop drawings would be useful to all parties involved with the project. Refer to Accurate's website for a deeper look into this format and some of the specific information it contains.

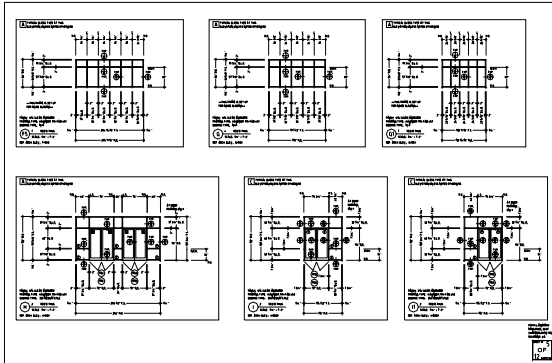
**Cover sheet(s)** include all the necessary schedules and notes for the project. A legend is provided to help the user understand the symbols/abbreviations used within the drawings. Project information such as job name and location, general contractor and architect are all included on the cover sheet.



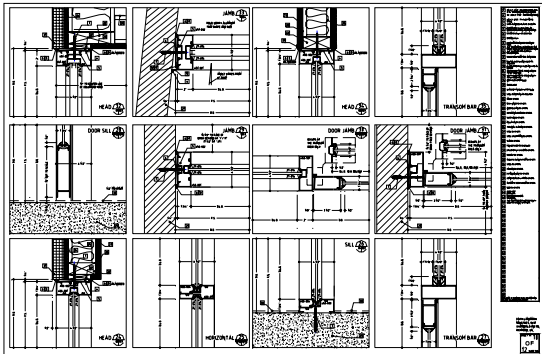
**Key (floor) plan sheet(s)** are generated with the scope of work clearly indicated in respect to the overall building plan. References are made to the proper sheets within the shop drawings for the quick and easy location of the noted work. Since the key plans are for reference only, they are often noted as not to scale.



**Elevation sheet(s)** contain the individual elevations for the scope of work on the project. All the pertinent information is included at the elevations such as dimensions, quantities, detail cuts, door numbers and much more. The detail balloons always reference sheet numbers for the quick and easy location of the details. Plan layouts and vertical sections are drawn for the elevations that need them. The typical scale for an elevation is 1/4"=1'-0".



**Detail sheet(s)** contain the individual details for the project. All details are fully drawn and dimensioned with all items noted. Fastener types, perimeter construction configuration/composition and framing notes/extrusions/part numbers are just a few of the items you will find at the details. All details are referenced to the architectural/structural drawings used to generate them for quick and easy coordination between these documents. The typical scale for a detail is 1/2" = 1" (half size).



**Plotting and delivery:** All drawings are plotted using an inkjet plotter. The standard sheet size is 36" wide x 24" tall and is plotted on reproducible bond media. *One set of shop drawings is included in Accurate's sheet pricing. All drawings are shipped to the customer via UPS. The cost of this shipment is included in Accurate's sheet pricing also.*

- Options:** Extra charges may apply, contact Accurate for more information
- 17" wide x 11" tall sheets
  - Delivery via next day air or from alternate shippers.
  - Delivery of plot files to a reprographic company in the client's local area.
  - Custom drawing formats.

**Drawing lead time:** The time needed to generate a set of shop drawings depends on the information provided to Accurate, project size/complexity, Accurate's current backlog, changes to the scope of work before and/or during drafting, information being supplied by the customer or it's suppliers and the shop drawing format being used on the project. Accurate's standard lead time is 4 weeks. All projects are handled on a first come, first serve basis. Quoted projects will be given a definite finish date in addition to a definite price.

**Revisions:** Shop drawing revisions are billed by the hour using the rate noted on this brochure. Plotting and shipping costs are added to the hourly costs for a project. The lead time for revisions is subject to the guidelines described above.

**Other drawing content and services:** Products related to the 8000 division of the specifications can also be drawn by Accurate. This includes, but is not limited to: Louvers, sunscreens, automatic doors, railings and metal panels. Especially useful are drawings for: aluminum fabrication, layouts of radiused/segmented elevations (to determine cut sizes and miter angles), glass sizes for pattern/bent applications and fabrication of steel/aluminum shapes. Accurate also offers submittals, material takeoffs, stock length cut lists, engineering and aluminum/glass consulting. Contact Accurate for pricing of these items.

**Service:** Accurate is committed to providing the best shop drawings in a reasonable period of time to it's customers. Consistency is something you can count on with Accurate. Accurate invites you to make use of it's services to reduce your employee workload. Accurate serves the entire United States and is diligent in generating drawings for all size projects. Long distance projects are the norm for Accurate and pose no problem for shop drawing accuracy or completion. Accurate is eager and capable of handling your unique situation. Call us today.